

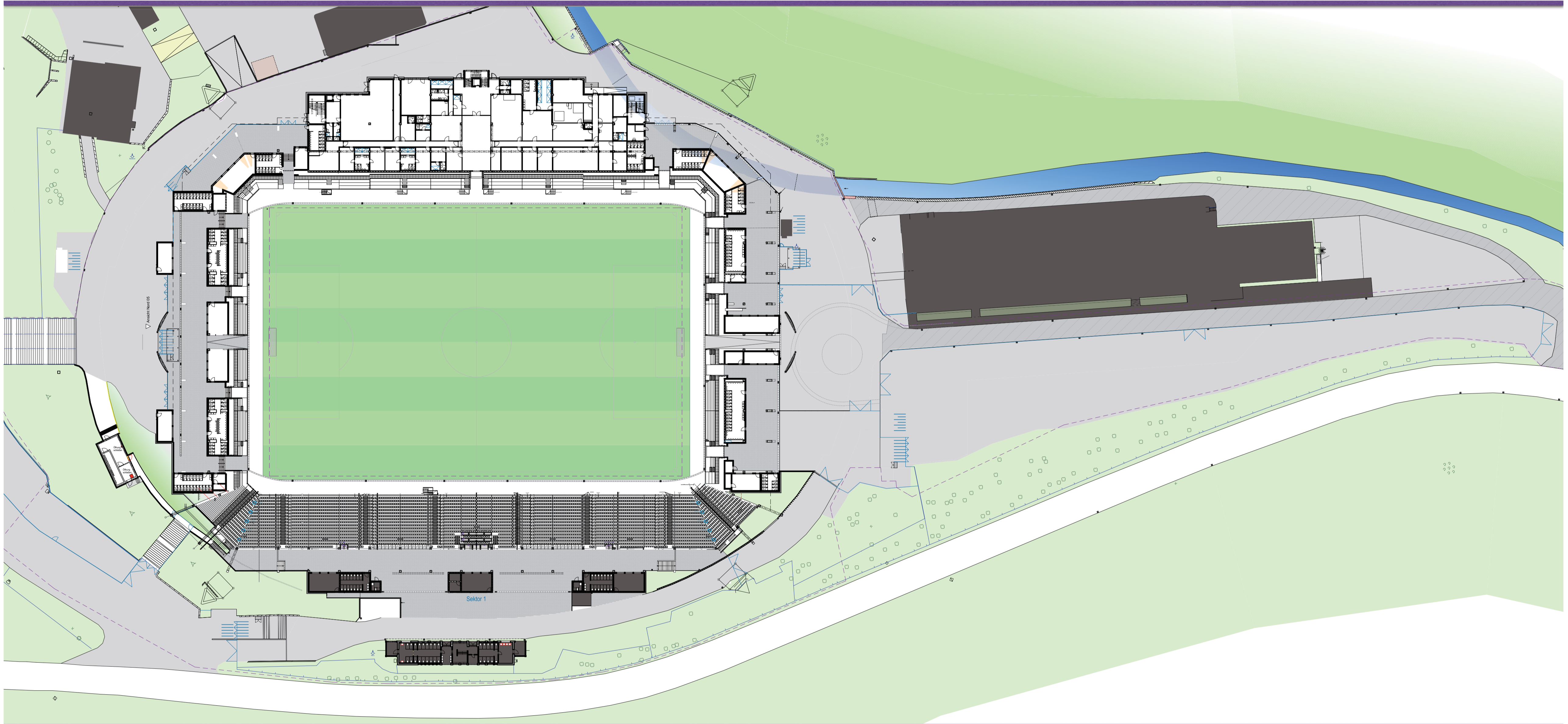


**WILLKOMMEN
IM SCHACHT**



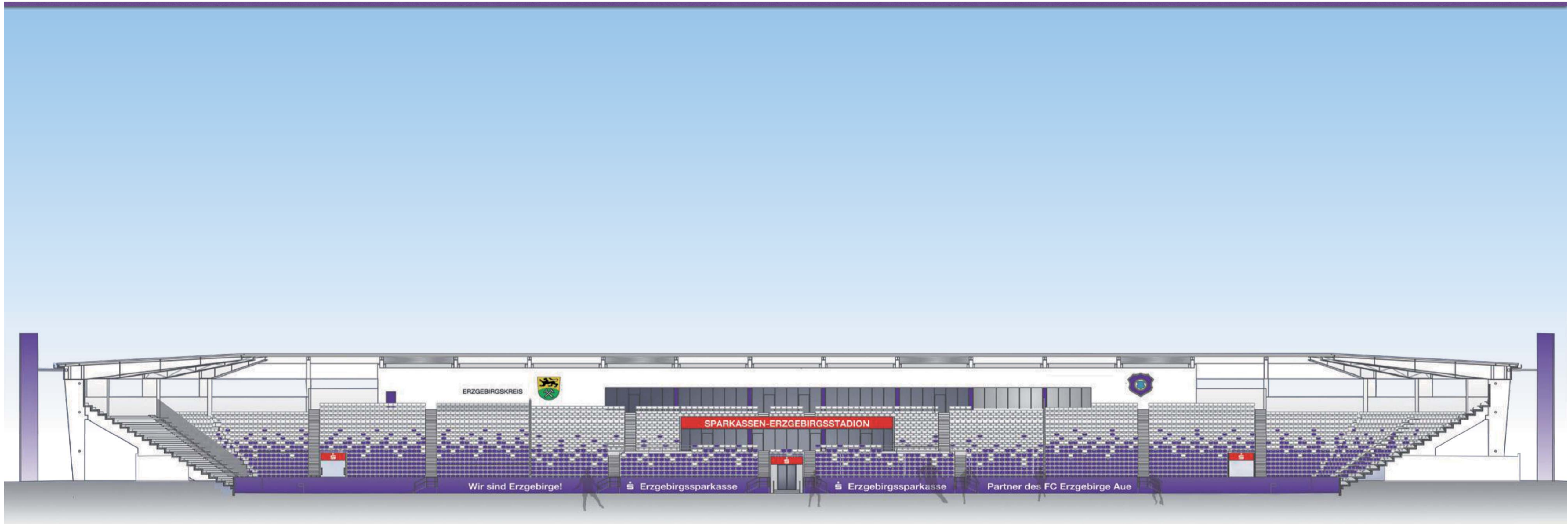


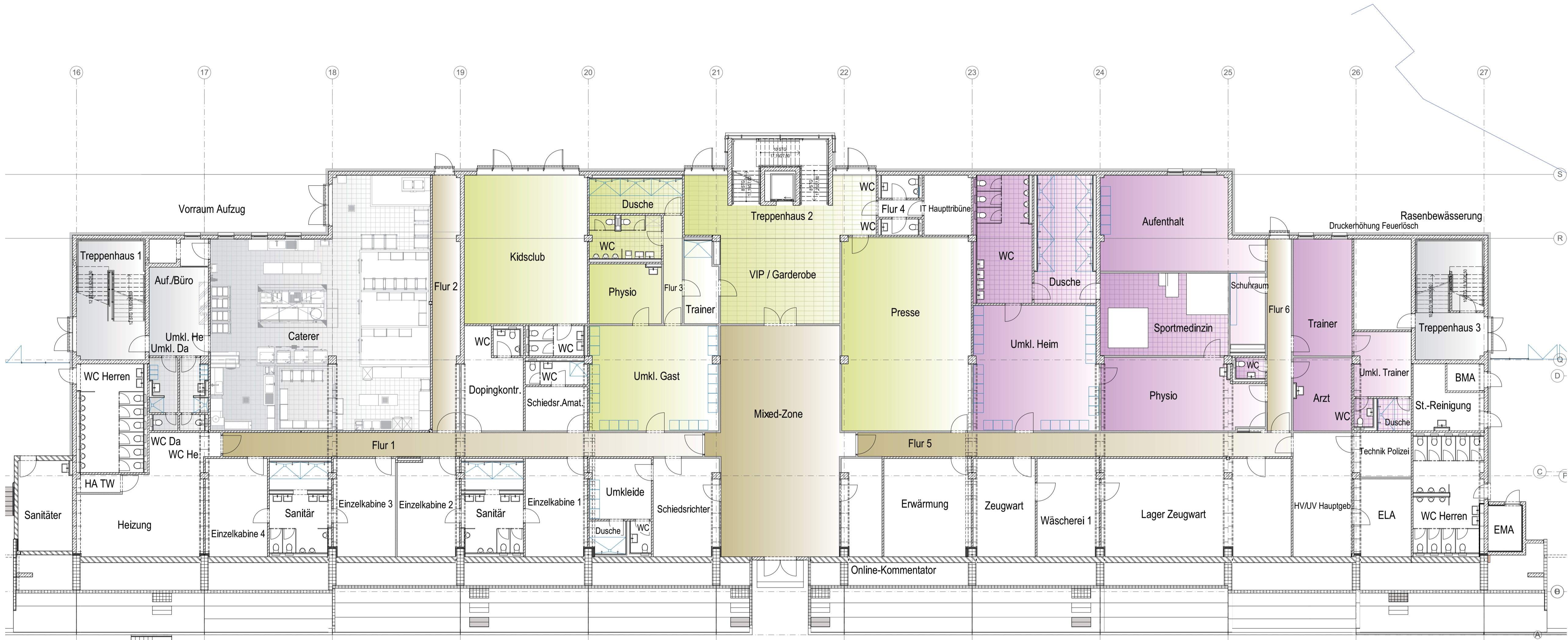


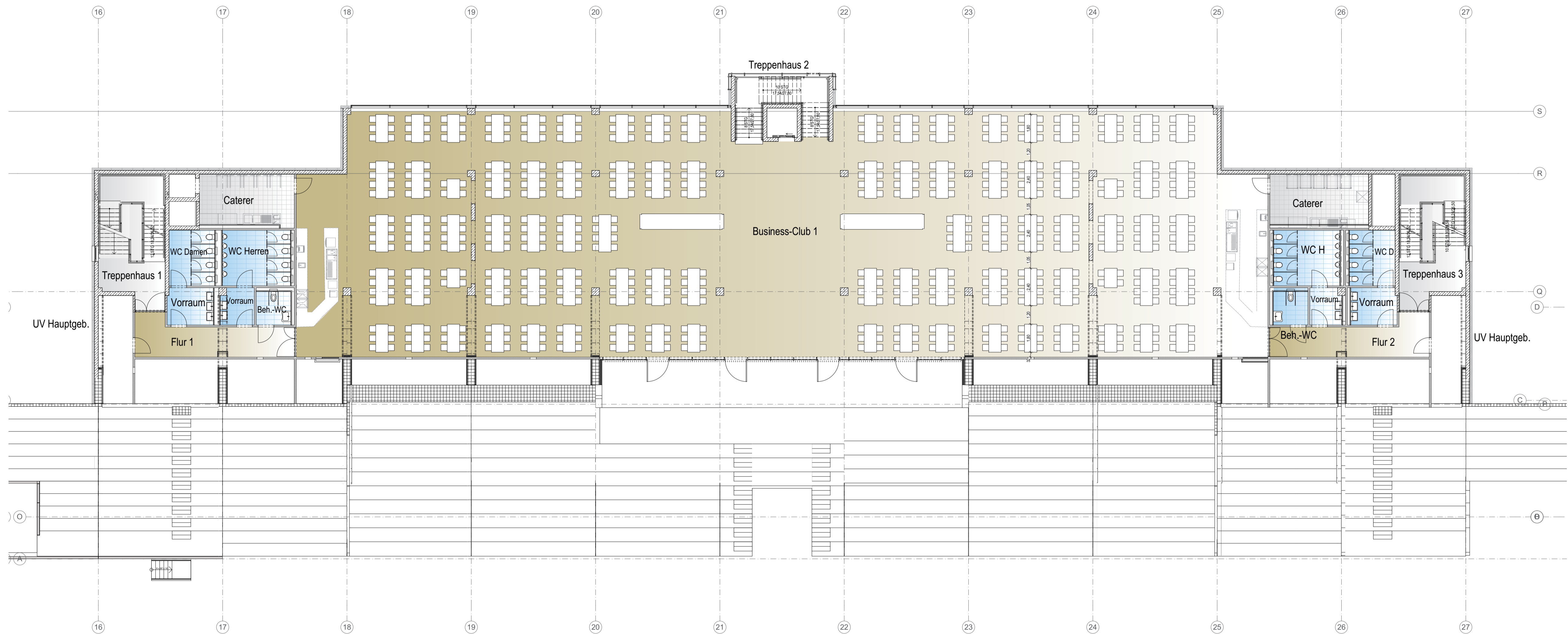


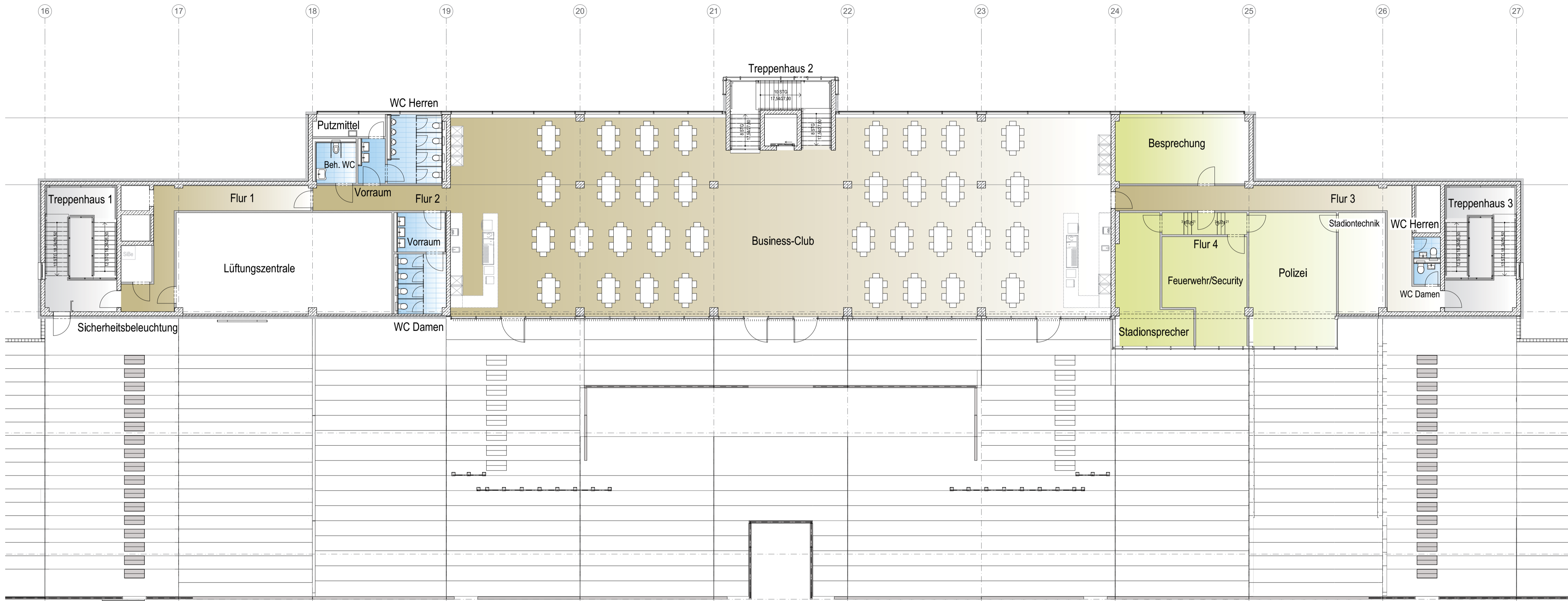








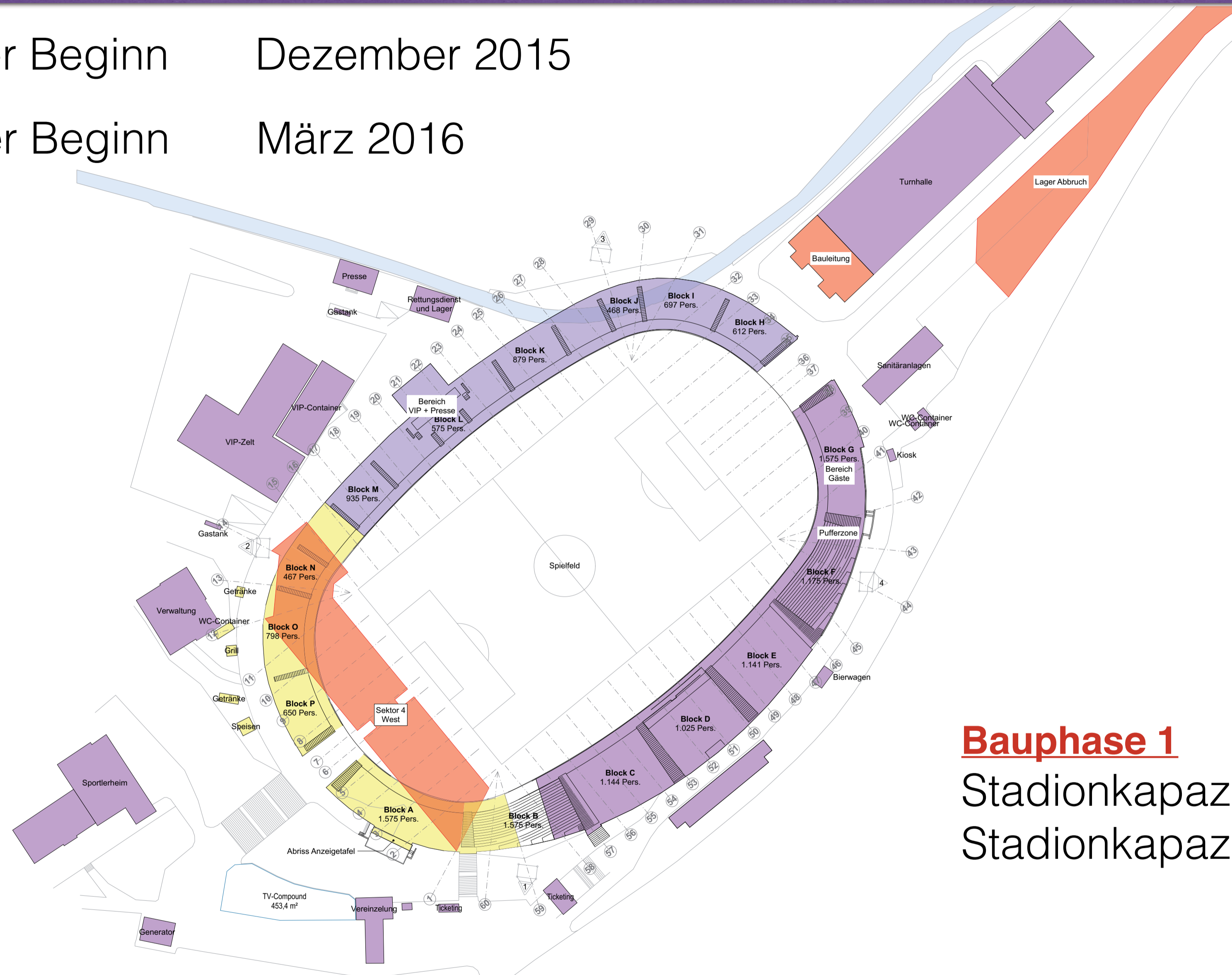






Abbruch: geplanter Beginn Dezember 2015

Rohbau: geplanter Beginn März 2016

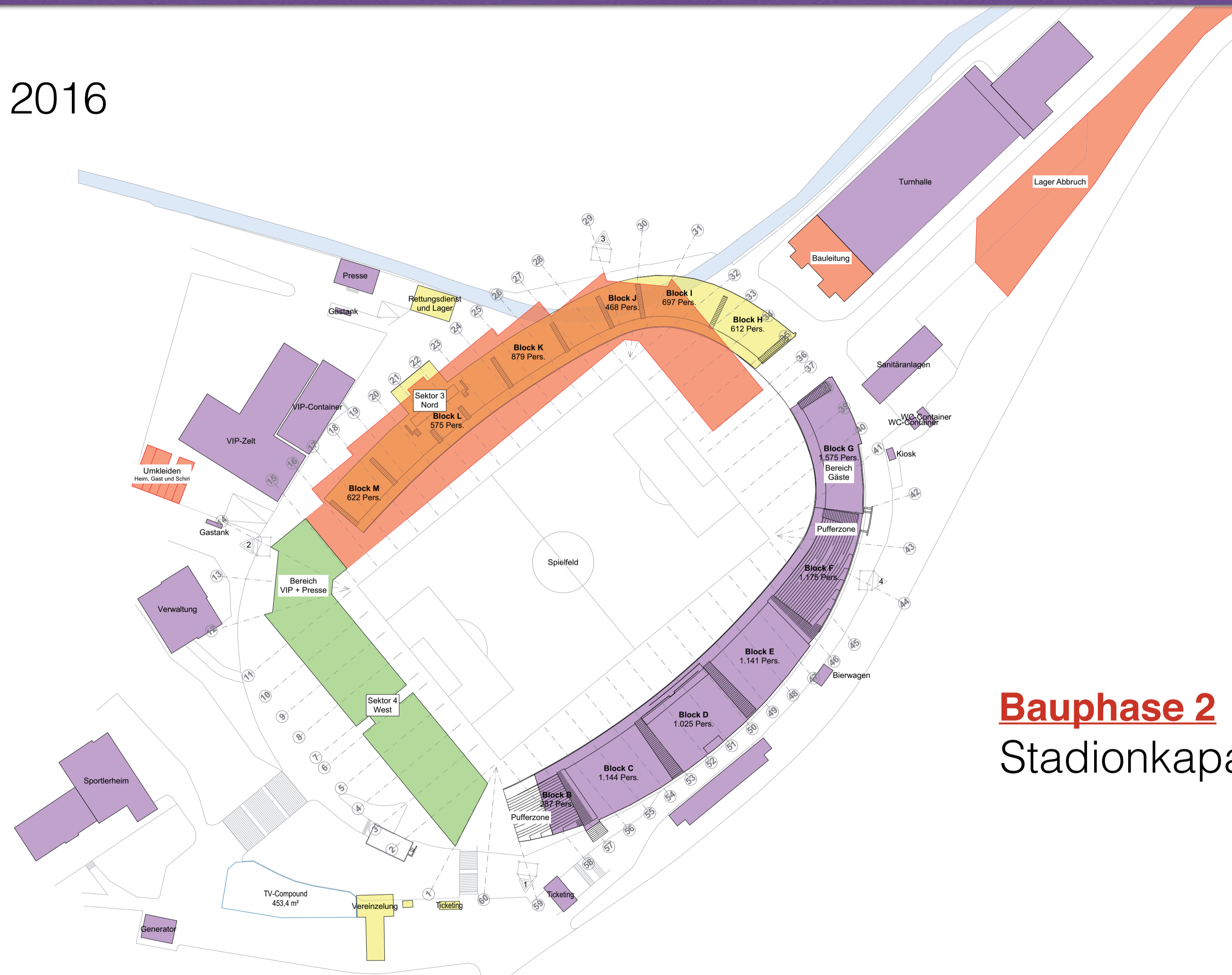


Bauphase 1

Stadionkapazität Bestand: 15.291
Stadionkapazität: 10.200



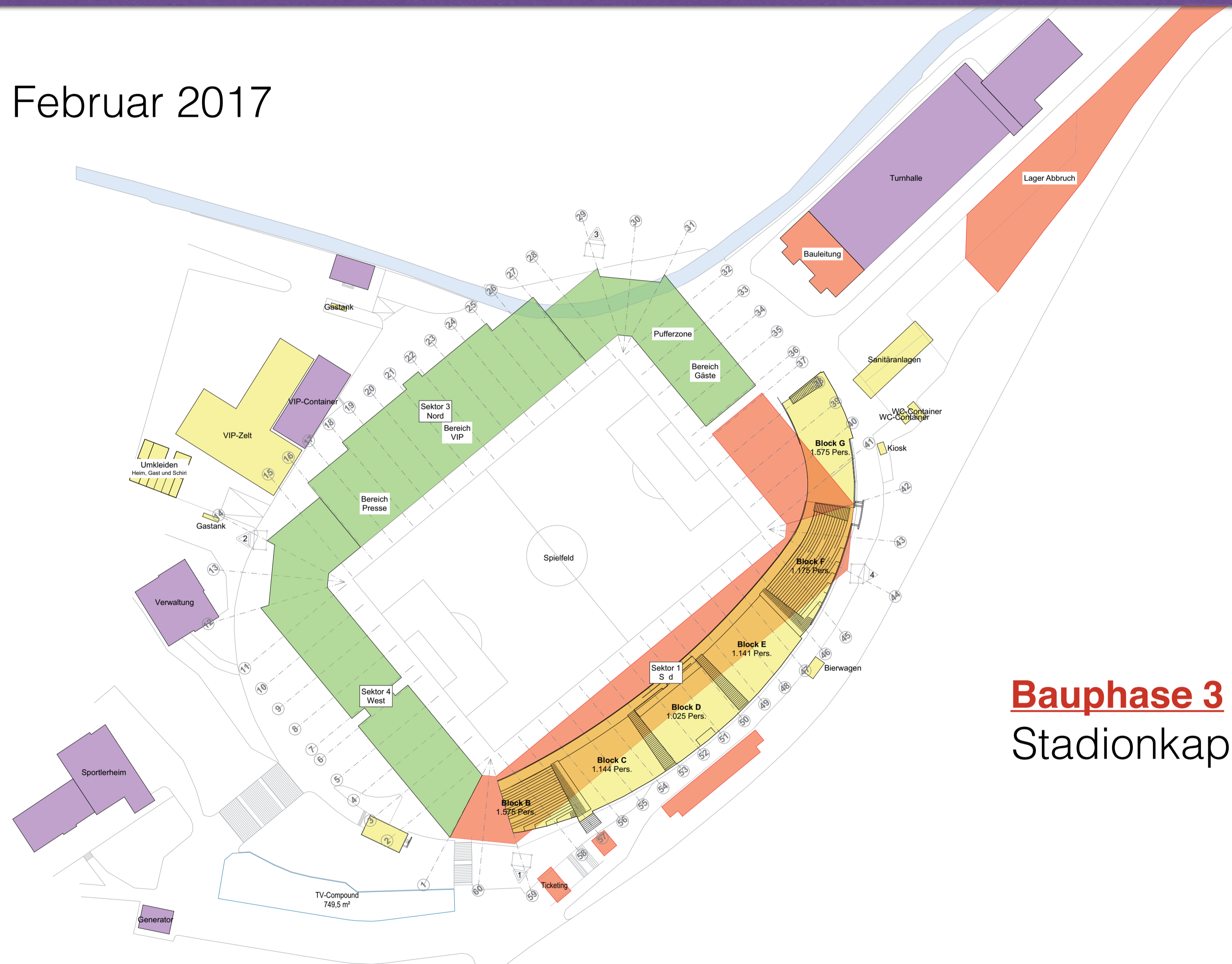
geplanter Beginn Mai 2016



Bauphase 2
Stadionkapazität: 11.159



geplanter Beginn ab Februar 2017

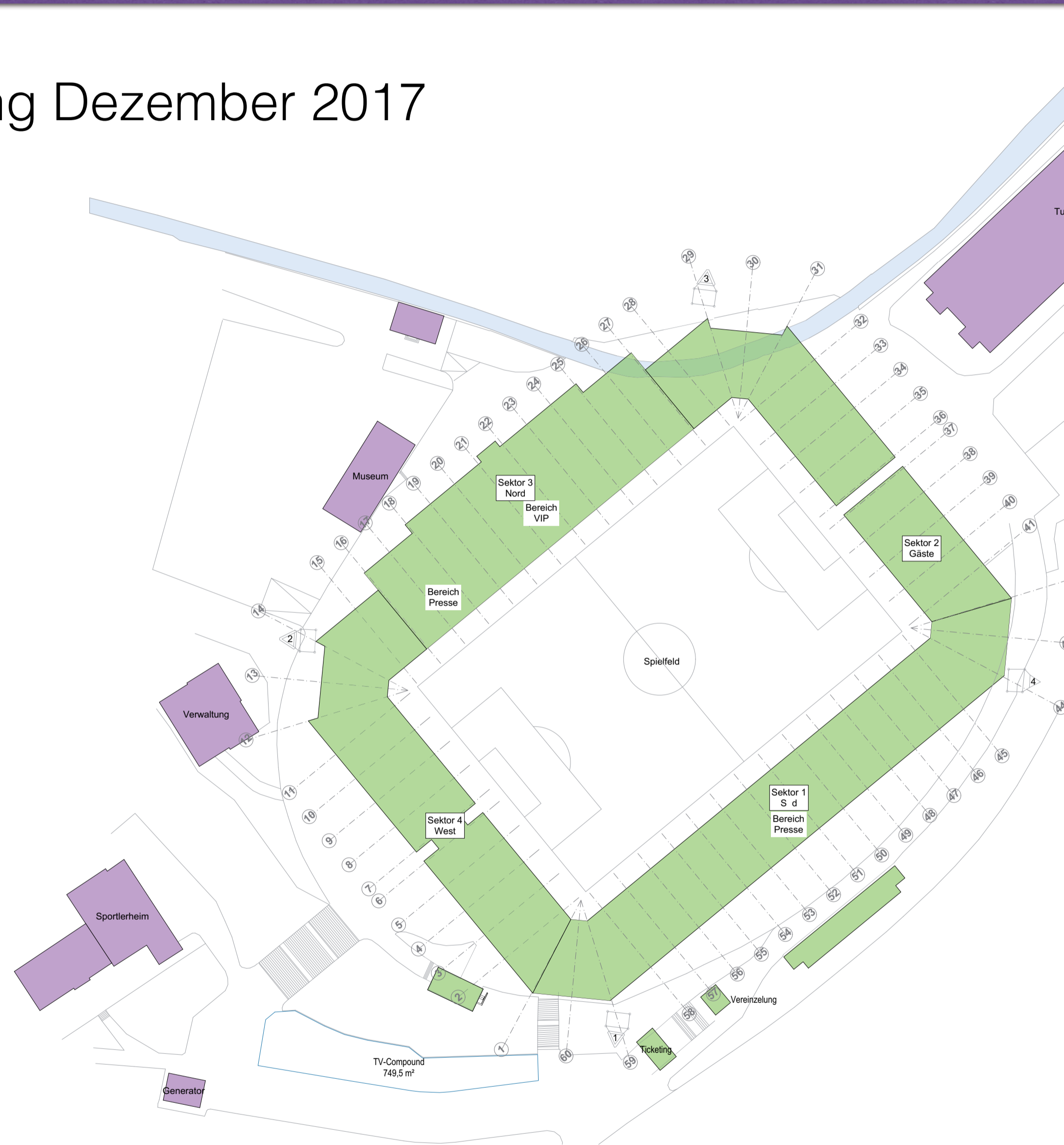


Bauphase 3

Stadionkapazität: 11.071



geplante Fertigstellung Dezember 2017



Endstand

Stadionkapazität: 16.500



